

Ibstock Brick Plc – Project Concorde



COMPLETED PROJECT

Key Details

Client: Ibstock Brick Plc

Sector: Industrial

Location: Aldridge Site, Walsall

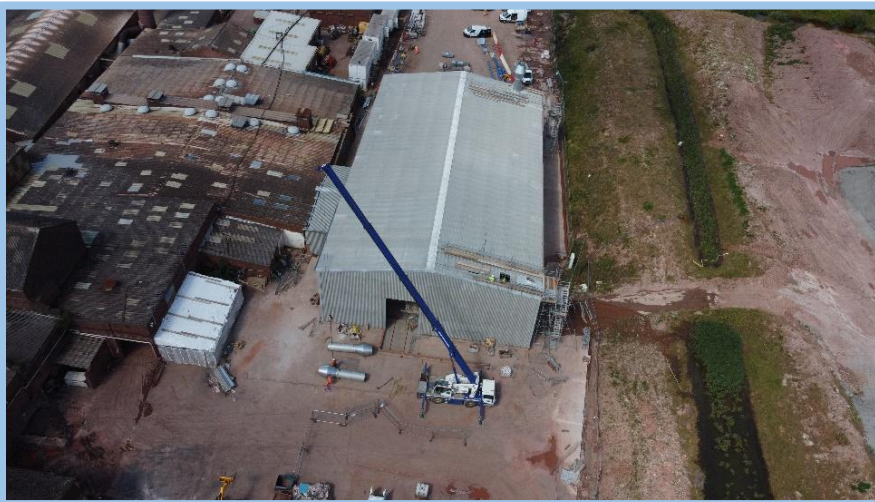
Principal Designer: Rolton Group

Contract Sum: £3.1million

Contract: NEC

Contract period: 15 months

Procurement Route: Competitive Tender





Chiel Construction constructed a new dryer building on behalf of Ibstock Brick. This project included ground-level reduction, pile foundations, a steel portal frame, roofing, and cladding. The internal scope also included upgrades to the Mechanical and Electrical systems and an external yard slab.

Project Scope:

- Following demolition previously completed by a client employed demolition contractor.
- Chiel's Scope was to construct a new dryer building including ground level reduction, piling matt, pile foundations, ground beams and slabs, steel portal frame, Roofing and Cladding, internal M&E, and external yard slab.

Project Restraints:

- Adhering to local environmental regulations and standards, particularly during ground-level reduction and pile foundation work.
- Completing the project within the specified timeline to avoid delays and additional costs.
- Maintaining high safety standards for workers, including managing Client directly employed contractors.