

Social Value/Community – Case Study – 2020-2025

- 2025 – Cardinal Wiseman – Careers Fair
- 2025 – West Coventry Academy – Work Experience
- 2025 – The University of Birmingham Football Match – Teambuilding event for both client and Chiel.
- 2025 – Rosie's Rainbow Pantry – Donation of a Raffle Prize for their annual ball
- 2024 – Templars Primary School – Donation of old phone handsets to the local playgroup
- 2024 – Rosie's Rainbow Pantry – Hosted a Charity Ball – raising sponsorship and awareness.
- 2024 – Eastern Green Playgroup – Installation of a new shed for toy storage.
- 2023 – Solihull College – Woodlands Campus – CDM Workshop Tutorials and Career and Diversity Talk.
- 2023 – Coventry Road Table 23 – Chiel Projects Director became a Chairman.
- 2022 – Solihull College – Woodlands Campus – Conducting Mock Interviews and onsite bricklayer observation and trial.
- 2021 – The University of Warwick – Wellesbourne Campus – Local Nursery we hosted a digger dance and handed toy diggers to all children to take away with them,
- 2020 - Coventry Peace and Reconciliation Committee, Friends of Allesley park and five local primary schools - To produce a Japanese Peace Garden in Coventry's War Memorial Park.

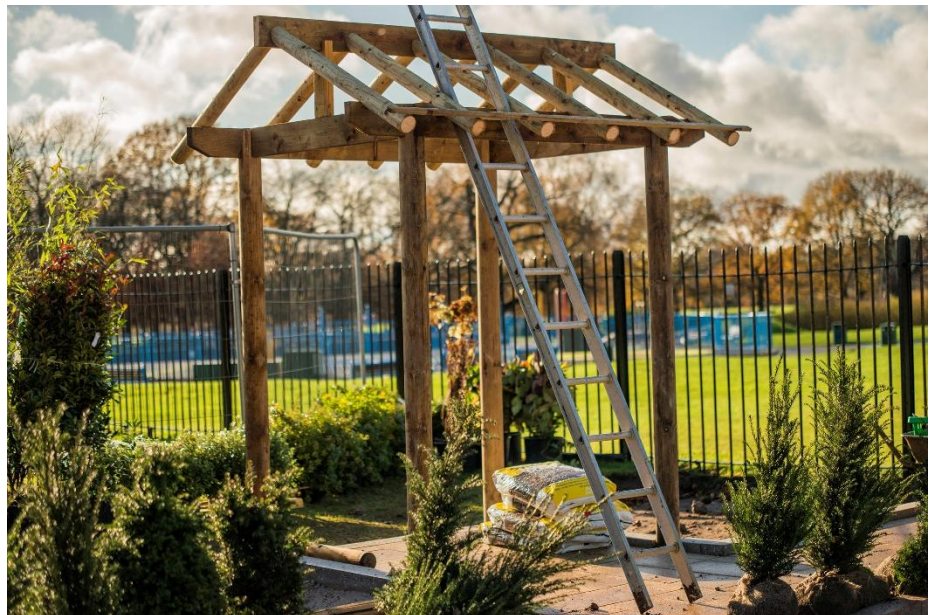
Ongoing supporting local scouts group – 21st (Coventry) Scout Group)

<https://www.chielcon.co.uk/community>



West Coventry Academy





Our Aim in the next 12 months is to continue–

- We aim to build stronger community ties by connecting with schools and nurseries around the University of Birmingham and the University of Warwick. This may include offering pupils and children the opportunity to visit our projects and see our work in action. We are committed to giving back by supporting local charities through fundraising, volunteering, and other meaningful initiatives.