

Nelson's Warf – Phase 3

Sector: Commercial

Key Details

Client: Grand Union Junctions Holdings Limited

Location: Nelson's Marina

Principal Designer: AG Dezin

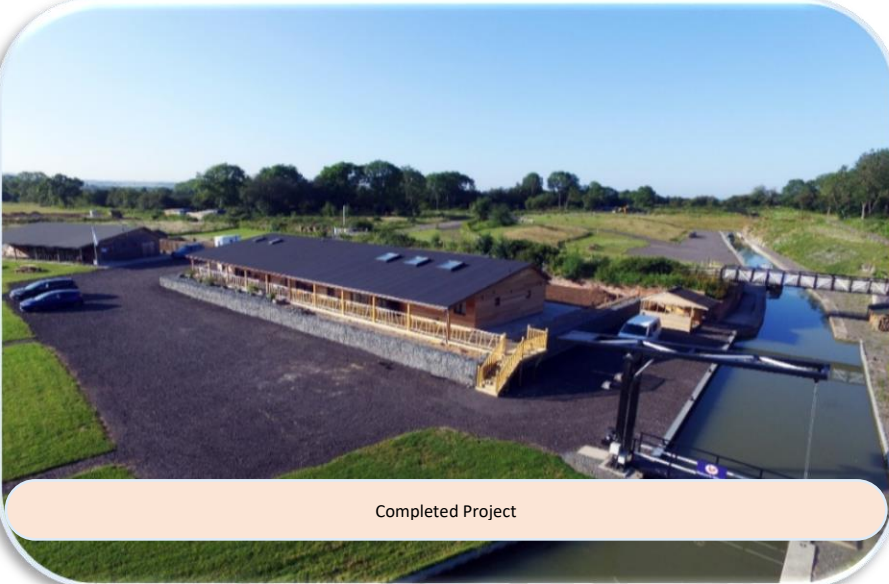
Principal Contractor: Chiel Construction

Contract Sum: £288,661.28

Contract: JCT Intermediate Building Contract 2011

Contract period: 23 weeks (30/10/17 – 13/4/18)

Procurement Route: Competitive Tender



Completed Project



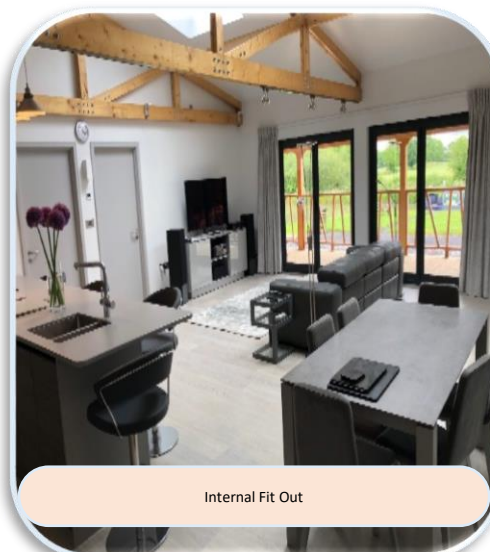
Installation of Concrete Foundation's



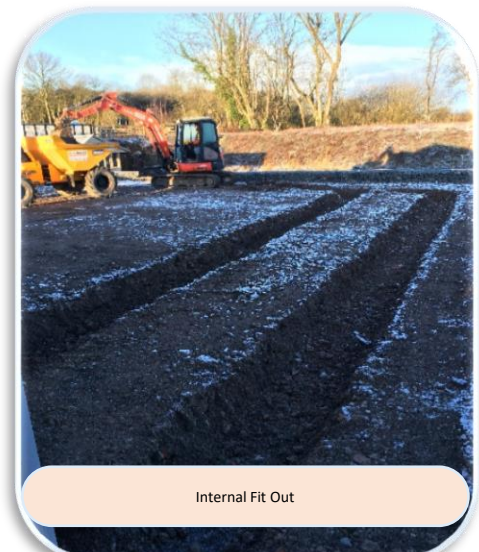
Completed Foundations

Scope of Works

- Demolition and site clearance
- Excavation and formation
- Drainage
- Ground floor slab
- Structure
- Airtight Internal Space
- Internal fit out
 - Bathrooms
 - Bedrooms
 - Kitchen



Internal Fit Out



Internal Fit Out

Tel: (024) 76 466 877
Fax: 08721 130782
e-mail: admin@chielcon.co.uk
web: www.chielcon.co.uk

Bailey House,
 Curriers Close,
 Canley,
 Coventry,
 CV4 8AW